



Pre-Nursing Workshop

Self-Paced Information Session

AAS and LPN-RN Advance Placement
Nursing Programs

WELCOME!

Nursing is a profession that embodies compassion, empathy, dedication, and determination. Each of you will find the program transformative in unique ways. Embrace the challenges, celebrate the victories, and support each other as you grow into exceptional nurses. Our faculty and staff are here to support you in every step of your academic and professional growth. They bring a wealth of knowledge and experience to guide you through your studies and clinical. Take full advantage of the resources available to you, ask questions, and engage actively in the learning process.

WELCOME!

PROGRAM CONTACT INFORMATION:

Nursing Program Office, Prescott Campus | 928-776-2017
Nursing Program Office, Verde Campus | 928-634-6512
Email: nursing@yc.edu
Website: www.yc.edu/nursing

ACADEMIC ADVISING APPOINTMENTS:

Prescott Campus | 928-776-2106
Verde Campus | 928-634-6510



WORKSHOP OBJECTIVES

This workshop will cover:

1. The Nursing Program (Mission, Locations, Accreditation)
2. Employment Outlook
3. Estimated Costs and Financial Aid
4. Types of Nursing Programs offered at YC
5. Requirements Before Applying
6. Applying to the Nursing Program
7. Selection Criteria Points System
8. Number of Available Placements per Location
9. Conditional Acceptance
10. Nursing Student Handbook



WHAT IS NURSING?

Definition of Nursing: *Nursing integrates the art and science of caring and focuses on the protection, promotion, and optimization of health and human functioning; prevention of illness and injury; facilitation of healing; and alleviation of suffering through compassionate presence. Nursing is the diagnosis and treatment of human responses and advocacy in the care of individuals, families, groups, communities, and populations in recognition of the connection of all humanity.* (ANA (2021). *Nursing: Scope and Standards of Practice, Fourth Edition*, p. 1.)



PROGRAM MISSION

The mission of the Yavapai College Nursing Program is to provide quality education that will develop competent, caring, holistic and ethical practitioners who value lifelong learning and adapt to continuous changes in the health care system.



Campus Locations Offered: Prescott and Verde Valley Campuses

LOCATIONS



Prescott Campus:
Classrooms, Labs



Verde Valley Campus:
Classrooms, Labs, Simulation Center

For complete data,
please go to the
[Nursing website.](#)

Success Rates and Program Outcomes

SUCCESS RATES

Performance on Licensure Exam By calendar year

YC NCLEX-RN pass rates at 85% for all first-time test takers from January 1st to December 31st.

	2025	2024	2023	
YC	84.85*	94.51	87.64	
AZ	TBA	93.75	90.39	
Nat'l	TBA	91.16	88.56	

* As of 9.22.25

Program Completion Rates

By academic year

Program Outcome: The program completion rate will be 70% or higher for students who complete within 100% of the program length.

	2024-2025	2023 - 2024	2022 - 2023	
	77.1%	77.6%	77.9%	

Job Placement Rates

By calendar year

Program Outcome: At least 65% of graduates will demonstrate achievement of job placement within 12 months.

	2025	2024	2023	
	84% *	88%	95%	

* As of 8.28.25

Accreditation Information

The Associate of Applied Science (AAS) nursing program at Yavapai College is accredited by the:

Accreditation Commission for
Education in Nursing (ACEN)
3390 Peachtree Road NE, Suite 1400
Atlanta, Georgia 30326
(404) 975-5000
www.acenursing.org



The RN-BSN program is fully accredited with ACEN and the AZBN as of September 2025.

Arizona State Board of Nursing
1740 W Adams Street, Suite 2000
Phoenix, AZ 85007
(602) 771-7800
www.azbn.gov



Licensure is done through the Arizona State Board of Nursing, not Yavapai College.
Contact the Arizona State Board of Nursing (www.azbn.gov) if you have ever been convicted of a felony to clarify if you are able to be licensed.

EMPLOYMENT OUTLOOK

- According to the U.S. Department of Labor (DOL)¹, Registered Nurses (RNs) will continue to be in demand, and job opportunities are expected to be favorable.
- Employment of registered nurses is projected to grow six percent (6%) from 2023 to 2033, faster than the average for all occupations¹.
- Students often receive offers for employment from the same health care organizations where they completed their clinical rotations. In Arizona, entry-level salaries range from about \$24.00-\$36.00 per hour or more, depending on the type of practice, benefits, and other considerations. In 2023, the average hourly wage was \$41.38/hour¹.

¹ Bureau of Labor Statistics, U.S. Department of Labor, Occupational Outlook Handbook, Registered Nurses, at <https://www.bls.gov/ooh/healthcare/registered-nurses.htm> (visited January 31, 2025).

Nursing Program Types:

Associate Applied Science: Nursing

LPN-RN Advance Placement

LPN Step-Out Option

Bachelor of Science in Nursing (RN-BSN)

Concurrent Enrollment Programs (CEP)

Meet with an Academic Advisor Regularly

- Review any changes to curriculum or admission criteria
- Create your Degree Works individualized educational plan
- Know when it is appropriate for you to take the entrance exam and apply

It is your responsibility:

- To be aware of Nursing Health Requirements and Technical Standards
- To read the Nursing Student Handbook, located on the nursing website
- To know the requirements for the Nursing Application

There will **be random testing for substance use** prior to clinical assignments and “For Cause” Testing

Please note that applicants should be at least 18 years of age by the time of program start.

- The Nursing Program is rigorous and involves a **full-time commitment of 40 hours or more per week.**
- Students must maintain a **minimum grade of 78%** in all nursing courses to remain in the program.
- Students must be prepared to meet the challenge and establish priorities before the start of classes.
- Outside employment: Because the nursing program is demanding, the program encourages students to consider that outside employment may interfere with the quality and success of academic performance. It is recommended that students work fewer than twenty (20) hours per week.



The Associate of Applied Science Degree in Nursing

- AAS Nursing is a 24-month program (four sequential semesters excluding summers) that prepares students for entry-level positions as registered nurses.
- The program starts twice per year: fall semester and spring semester.
- Prior to program application, the applicant must have a current AZ certification as a CNA or LNA or successfully complete AHS 114, AHS 114C, AHS 114L (6 credits) or an equivalent training course within the last 3 years of the application deadline.
- Students must complete 28 credit hours of pre-requisite and co-requisite courses
- Students must complete 40.5 credits of Nursing Program core courses.
- Applicants are responsible for obtaining the most recent application information guide. *Please review the [Nursing Applicant Information Guide](#) on the [YC Nursing website](#) for complete information.*
- Current requirements and procedures for application may be obtained on the [Nursing website](#).

ASSOCIATE OF APPLIED SCIENCE DEGREE

The Associate of Applied Science Degree in Nursing: Courses

Fall Term 1	10 credit hours	Hours
• NSG 140 Nursing Theory I		4
1 st 8 weeks		
• NSG 143 Development of Nursing Practice I		2
• NSG 145 Pharmacology for Nursing I		1
2 nd 8 weeks		
• NSG 142 Application of Nursing Theory I		2
• NSG 144 Mental Health Nursing Theory I		1
Term hours subtotal:		10

Fall Term 2	10 credit hours	Hours
• NSG 241 Nursing Theory III		5
• NSG 242 Application of Nursing Theory III		3
• NSG 260 Mental Health Nursing Theory II		2
Term hours subtotal:		10

Spring Term 1	11 credit hours	Hours
• NSG 151 Nursing Theory II		3
• NSG 154 Maternal/Child Nursing Theory		2
• NSG 155 Pharmacology for Nursing II		2
1 st 8 weeks		
• NSG 153 Development of Nursing Practice II		2
2 nd 8 weeks		
• NSG 152 Application of Nursing Theory II		2
Term hours subtotal:		11

Spring Term 2	9.5 credit hours	Hours
• NSG 270 Nursing Theory IV		3
1 st 8 weeks		
• NSG 280 Professional Nursing Concepts		2
2 nd 8 weeks		
• NSG 272 Application of Nursing Theory IV		4.5
Term hours subtotal:		9.5

LPN-RN Advanced Placement AAS Degree

LPN to RN Advanced Placement

- Candidates have a current, unencumbered license as a Licensed Practical Nurse (LPN) in the state of Arizona.
- Whereas the traditional Associate of Applied Science (AAS) Degree in Nursing is a 24-month program (4 sequential semesters excluding summers), the LPN-RN AP program is 12-months (2 consecutive semesters) and offers an opportunity to enter the AAS program in the 2nd year or 3rd semester and will prepare students for entry-level positions as registered nurses.
- The program starts twice yearly: in the fall and again in the spring semester. Students must complete 28 credit hours of pre-requisite courses and 19.5 credits of Nursing Program core courses to earn their AAS degree. Credit for prior learning is given for LPN license.
- *Please review the [Nursing Applicant Information Guide](#) on the YC Nursing website for complete information.*

Graduates of the program (AAS and LPN-RN AP options) are eligible to:

1. Receive an AAS degree in Nursing
2. Sit for the National Council Licensure Examination for Registered Nurses (NCLEX-RN)
3. Apply for licensure to practice nursing (Registered Nurse)

- The Arizona State Board of Nursing

1740 W Adams Street, Suite 2000

Phoenix, AZ 85007

(602) 771-7800

azbn.gov

- Licensure is done through the Arizona State Board of Nursing, not Yavapai College

NOTE: Contact the **Arizona State Board of Nursing** if you have ever been convicted of a felony to clarify if you are able to be licensed.

As registered nurses (RNs), graduates provide and coordinate patient care and educate patients and the public about various health conditions.

LPN Step-Out Option

- Students who successfully complete the first year of the AAS program have the option to apply for licensure with the Arizona Board of Nursing as a Practical Nurse (LPN) and be eligible to take the NCLEX-PN after successful completion of LPN190.
- LPN 190 – Practical Nursing Transition is 1.5 credits and is an overview of the role of the practical nurse in the care of patients. The course includes nursing standards and scope of practice of the practical nurse. Focus is on the role of the practical nurse in providing care through interventions consistent with established nursing care plans.
- **Prerequisites:** [NSG 151](#), [NSG 152](#), [NSG 153](#), [NSG 154](#), [NSG 155](#), [BIO 205](#)
- *Interested students should meet with their academic advisors to develop an appropriate academic plan.*
- *Approval must be granted by the director of nursing to ensure the student is in good academic standing.*

The LPN Step Out Option: Courses

Fall Term 1	10 credit hours	Hours
• NSG 140 Nursing Theory I		4
1 st 8 weeks		
• NSG 143 Development of Nursing Practice I		2
• NSG 145 Pharmacology for Nursing I		1
2 nd 8 weeks		
• NSG 142 Application of Nursing Theory I		2
• NSG 144 Mental Health Nursing Theory I		1
Term hours subtotal:		10

Spring Term 1	15 credit hours	Hours
• NSG 151 Nursing Theory II		3
• NSG 154 Maternal/Child Nursing Theory		2
• NSG 155 Pharmacology for Nursing II		2
• BIO 205 Microbiology		4
<small>General Education Co-Requisite Requirement</small>		
1 st 8 weeks		
• NSG 153 Development of Nursing Practice II		2
2 nd 8 weeks		
• NSG 152 Application of Nursing Theory II		2
Term hours subtotal:		15

Bachelor of Science in Nursing RN-BSN

- Candidates have a current, unencumbered license as a Registered Nurse (RN) in the state of Arizona and have successfully completed an associate degree nursing program at a regionally accredited institution validated by transcript(s).
- The Bachelor of Science in Nursing (RN-BSN) degree prepares nurse leaders by building on prior knowledge and experience to address the healthcare needs of the community.
- The RN-BSN program can be completed in 12-month program (three sequential semesters including summers) for full-time students. All RN-BSN courses are 100% online.
- The RN-BSN degree requires completion of a minimum of 120 credits.
- The program starts three times per year: fall, spring, and summer semesters.
- *For more information, please visit www.yc.edu/bsn.*



The RN-BSN Program: Courses

Fall Term 1 *15 credit hours* Hours

Full Semester	
<ul style="list-style-type: none"> MAT 167 – Elementary Statistics OR PSY/SOC 230 – Introduction to Statistics in the Social and Behavioral Sciences 	3
1 st 8 weeks	
<ul style="list-style-type: none"> MGT 233 - Business Communication <i>Recommended Program Elective</i> 	3
<ul style="list-style-type: none"> Program Elective 	3
2 nd 8 weeks	
<ul style="list-style-type: none"> LDR 202 - Strategic Leadership <i>Recommended Program Elective</i> 	3
<ul style="list-style-type: none"> Program Elective 	3

Term hours subtotal: 15

Summer Term 1 *6 credit hours* Hours

<ul style="list-style-type: none"> NSG 350 - Nursing Research and Evidence Translation 	3
<ul style="list-style-type: none"> NSG 410 - Issues in Professional Practice 	3

Term hours subtotal: 6

Spring Term 1 *16.5 credit hours* Hours

1 st 8 weeks	
<ul style="list-style-type: none"> LDR 201 - Leadership Essentials <i>Recommended Program Elective</i> 	3
<ul style="list-style-type: none"> NSG 310 - Transition and Concepts of Professional Nursing 	3
<ul style="list-style-type: none"> NSG 320 - Nursing Practice in a Multicultural Society 	3
2 nd 8 weeks	
<ul style="list-style-type: none"> LDR 203 - Organizational Leadership <i>Recommended Program Elective</i> 	3
<ul style="list-style-type: none"> NSG 330 - Advanced Assessment and Health Promotion 	3
<ul style="list-style-type: none"> NSG 340 - Nursing Informatics 	1.5

Term hours subtotal: 16.5

Fall Term 2 *14 credit hours* Hours

1 st 8 weeks	
<ul style="list-style-type: none"> NSG 420 - Population-Based Nursing in the Community 	4
<ul style="list-style-type: none"> NSG 430 - Aging and End of Life 	3
2 nd 8 weeks	
<ul style="list-style-type: none"> NSG 440 - Global Health: Ethics and Human Rights 	3
<ul style="list-style-type: none"> NSG 450 - Nursing Leadership 	4

Term hours subtotal: 14

What is meant by Concurrent Enrollment Program (CEP)?


- Students in the YC AAS Nursing Program take coursework from a university that is partnered with Yavapai College to simultaneously pursue an Associate Degree in Nursing (ADN) and a Bachelor of Science in Nursing (BSN).
- Currently our partnerships include Arizona State University (ASU), Grand Canyon University (GCU), Northern Arizona University (NAU), and University of Phoenix (UOPX).

How are students selected for participation in the CEP?

- Students must complete an application to the YC Nursing Program and must have completed the pre-requisite courses for YC and the requirements for the partnering university to be considered for admission to the CEP program.

ASU Concurrent Enrollment Program (CEP)

Deana Castellanos

 (602) 496-0937

 asu.cep@asu.edu

Zoom and phone
appointments available.

Send unofficial transcripts
for eligibility review!

- Complete BSN coursework online with ASU while simultaneously completing your AAS Nursing degree with Yavapai College.
- Opportunity to earn both degrees in the exact same semester.
- Flexible plan of study; students can take breaks from the ASU coursework, if needed, in consultation with ASU academic advisor.
- ASU courses are taught 100% online.
- Reduced tuition rate is available. Current tuition rates can be viewed at students.asu.edu/tuition.
- Review the [Yavapai-ASU CEP Handbook](#) for additional details, including sample plans of study.

To be eligible to join the ASU CEP, students must meet the following criteria:

- ✓ Be admitted to or enrolled in the YC associate degree nursing program.
- ✓ Earn a minimum 3.0 ASU prerequisite GPA, which is calculated using the following courses:
 - ✓ ENG 101 First Year Composition I
 - ✓ ENG 102 First Year Composition II
 - ✓ MAT 141 College Mathematics or higher
 - Mathematics course must fulfill ASU's MA or MATH general studies requirement.

Additional online postlicensure options:

RN to BSN links.asu.edu/rnbsn

RN to MS bridge (bachelor's degree not required) links.asu.edu/rn-ms | links.asu.edu/rn-ms-ned



CONCURRENT ENROLLMENT AT NAU

Pursue your associate degree while completing a bachelor's degree in Nursing with NAU.

NAU partners with community colleges across Arizona to offer flexible pathways for students statewide.

With our CEP program, you will complete your BSN at the same time as your RN, without having to be licensed first.

If you start your program and then decide to pursue your BSN, we have a Mid-AAS program you can start at any time.

NAU will transfer 90 credits from your community college, leaving just 30 credits to complete with NAU.

This program is accredited by the Commission on Collegiate Nursing Education.

online.nursing@nau.edu
nau.edu/cep
928-523-2671



NAU NORTHERN ARIZONA UNIVERSITY

College of Nursing

GCU NCEP Program

Program Facts

- **Start your BSN sooner:** GCU requires no prerequisite courses for BSN.
- **Focus on your RN coursework:** Most GCU classes are only five weeks long and are completed online.¹ Clinical, practicum and immersion hours completed locally.
- **Get specialized support:** GCU has a representative specializing in this program specifically for YC students.
- **Mid-Point entry opportunity:** Start courses after semester two before semester three.
- **Scholarship opportunity:** GCU CEP students get a discount on all concurrent courses
- **MSN Options for BSN graduates-** 6 emphases

YC/GCU representative

Glendy Munoz Medina

Online/ Master's Programs

(602) 206-6788 Cell

Glendy.MunozMedina@gcu.edu

To book an appointment:

<https://calendly.com/glendy-munozmedina>





Earn your ADN and BSN in as little as 3 years

Our Concurrent Enrollment Program (CEP) was built for community college students like you.



It's fast

To earn a BSN, community college nursing students normally have to transfer to a four-year university, where credits are evaluated individually. With us, you'll transfer **87 credits** for earning your ADN.

Contact our dedicated CEP staff to learn more

Stephanie Dement

stephanie.dement@phoenix.edu

916.904.0050

phoenix.edu/transferpathways



It's affordable

In addition to your transferred credits, you'll need just **33 credits** to complete your BSN. That means you'll pay only for the classes you need – not repeats or general courses. Plus, we've lowered tuition to \$350 per creditor for students.

\$350 per credit unit Tuition: 33 BSN Core Units at \$350 per unit = \$11,550.00

5 + 1 Tuition Benefit: \$11,550.00 - \$1,050.00 = \$10,500.00

E-books: \$170 per course x 11 courses = \$1,870.00

Estimated Program cost = \$12,370.00



MSN/Bridge

Take three upper-level courses and then choose the master's path that best suits your needs.

Designed for RNs that have a bachelor's degree in an unrelated field, this program helps working nurses more quickly earn their MSN - in turn, saving time and money - and preparing you for new opportunities in your future.

RN-BSN
87 credit BLOCK
TRANSFER \$350 per credit

The Bachelor of Science in Nursing and the Master of Science in Nursing programs at the University of Phoenix are accredited by the Commission on Collegiate Nursing Education, 655 K Street, NW, Suite 750, Washington, DC 20001, 202-887-6791.

These degree programs include clinical courses or a practicum, which may not be completed in certain states. Please check with a University enrollment representative. While widely available, not all programs are available

in all locations or in both online and on-campus formats. Please check with a University enrollment representative. The University's Central Administration is located at 4025 S. Riverpoint Parkway, Phoenix, AZ 85040.

© 2021 University of Phoenix, Inc. All rights reserved. | FL1- BRA0005383-CEP- B2





Before Applying to the Nursing Program

Complete program pre-requisites and co-requisites

Before Applying:

Important: Students must apply to and be admitted to Yavapai College prior to applying to the Nursing program. Please go to www.yc.edu and click on Admission > Become A Student at the top-left of the page to learn about the college admission procedure.

Prior to program application, the following must be completed:

- ❖ *Review the Nursing Applicant Information Guide*
- ❖ *Complete Nursing Information Session and print out certificate of completion*
- ❖ *Prepare for pre-admission testing and schedule a test date*
- ❖ *Meet with an Advisor to complete a pre-entry check sheet form*
- ❖ *Be prepared to submit transcripts from YC and other schools where you completed the prerequisite courses*
- ❖ *Get an Arizona Level 1 fingerprint clearance card.*
- ❖ *For LPN-RN AP students: complete a pharmacology refresher course within the past 12 months and complete a dosage calculation exam (schedule with the testing center).*

NOTE: There are no waivers for a CNA/LNA certification. Experience as an ED tech, EMT, or other healthcare related technician position is not an acceptable substitute for CNA/LNA certification.



The Associate of Applied Science Degree in Nursing: Prerequisites

Prior to program application, the following must be completed:

➤ **Nursing Assistant Training or Certification**

- Be an Arizona State Certified Nursing Assistant with **current** certification/license **in good standing**,

OR

- AHS114, AHS 144C, and AHS 114L (6 credits) at YC (or equivalent) within the last 3 years of the application deadline

An application is required for AHS 114, visit www.yc.edu/alliedhealth to find the application information.

A list of qualifying programs can be found on the AZBN website (<https://azbn.gov/education/education-program-lists>).

Applicants who have successfully completed equivalent training courses from other states will need to show documented proof of the number of hours of training completed.

PRE-ENTRY
REQUIREMENTS

PRE-REQUISITE REQUIREMENTS

Pre-program entry requirement		Pre-Requisites	Credits
Current Arizona certification as a CNA, LNA OR AHS 114 AHS 114C AHS 114 L or equivalent within the last three years of the application deadline.			6
Fall Term 1		<i>10 credit hours</i>	
ENG 101	College Composition I (or ENG 101A or ENG 103)	ENG 095/100 OR placement	3
MAT 141	College Math (or MAT 142)	MAT 092 OR placement	3
BIO 156 BIO 181	Human Biology for Allied Health OR General Biology I	Reading proficiency	4
Spring Term 1		<i>14 credit hours</i>	
ENG 102	College Composition II (or ENG 104)	ENG 101 OR consent	3
PSY 101	Introduction to Psychology OR	None	
PHI 204	Medical Ethics	ENG101 or ENG103	3
BIO 201	Human Anatomy & Physiology I	BIO156 OR BIO181	4
BIO 205	Microbiology	BIO100 or BIO156 or BIO181	4
Summer Term 2		<i>4-7 credit hours</i>	
BIO 202	Human Anatomy & Physiology II	BIO 201	4
MAT 167	Elementary Statistics (required for RN-BSN program)	MAT 141, MAT 142, MAT 152	3
Total Pre-Requisite Credits			34-37

- For more information and details, the [pre-entry progression plan](#) can be found on the YC website www.yc.edu/nursing.
- **All Math and Science courses must be taken within the past 10 years of starting the program.**

NURSING PROGRAM TESTING INFORMATION

AAS Pre-Admission testing:

- Testing must be completed at YC; test scores from other schools are not acceptable
- Sign up through the YC testing center for a test date to complete your pre-admission testing
- Students may take the **test only once during each application cycle**
- Test scores are good for two consecutive application cycles (students may use the current test score that is the highest)

- Pre-admission testing is offered once a semester (beginning of Fall and Spring) – check the website for dates
- Registration is through the YC Testing Services website (www.yc.edu/testing)
- Exam scores must be submitted with nursing application

Traditional AAS applicants: ATI Test of Essential Academic Skills (TEAS) Exam

**LPN-RN AP applicants (only): NLN Nursing Acceleration Challenge Exam (NACE)
Foundations of Nursing (FON) v1.2**

ATI TEAS Test Information

- 170 questions total
- Test length is 209 minutes

Sections are timed, and you will be tested on:

- Reading: 45 questions in 55 minutes
- Math: 38 questions in 57 minutes
- Science: 50 questions in 60 minutes
- English and Language Usage: 37 questions in 37 minutes



Students must set up an ATI TEAS account prior to their test date. The ATI TEAS username and password are required for the exam. Must use your YC scholar email for the ATI account setup. Go to www.atitesting.com to create an account.

The ATI TEAS is taken online.

A calculator will be provided.

ATI TEAS Testing Information

ATI TEAS PRE-ADMISSION TESTING STUDY RESOURCES

•ATI TEAS Testing Website

- www.atitesting.com/teas
- Study manual – printed or eBook
- Study packages, tutorials, & assessments

Additional study resources

Apps for phone/tablet (ATI TEAS)

NurseHub (www.nursehub.com)

Quizlet: www.quizlet.com

Mometrix Test Preparation: www.mometrix.com

ATI TEAS Study Sessions through the YC Learning Center!

Completing pre and co-requisite coursework is the best way to prepare to take your exam.

Individual Performance Profile ATI TEAS, Version 7



Individual Name:	First Last	Test Date:	01/01/2021
Institution:	Program	Attempt:	1 of 1
Program Type:	PN	Days Since Last Attempt:	0
Student Number:	123456789		

Scores

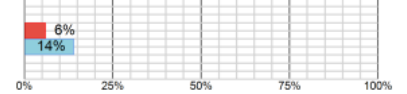
Total Score:

46.0%

Academic Preparedness Level: **Basic**

National Mean: 65.6% All PN Programs Mean: 68.4%

Percentile Rank: % of students who scored at or below your score



Reading Score:

36.2%

Math Score:

68.8%

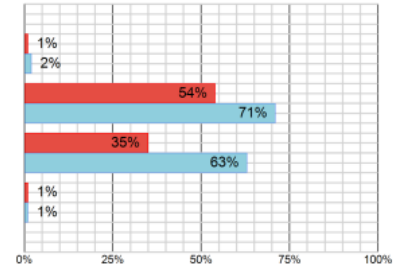
Science Score:

48.9%

English and Language Usage Score:

29.2%

Percentile Rank: % of students who scored at or below your score



National All PN Programs

Content areas do not add up to the total score



2022-2023

Official
ATI TEAS®
Study Manual

Aligned to the new ATI TEAS Version 7 blueprint



Everything you need
to know from the
creator of the exam.

YC YAVAPAI
COLLEGE

Be More

NLN NACE FON v1.2 TEST INFORMATION

NLN NACE FON v1.2 Test Information

- 100 questions total
- Test length is 150 minutes

You will be tested on:

- Assessment: 24 questions
- Evaluation: 23 questions
- Implementation: 29 questions
- Planning: 24 questions



Students must set up an NLN account prior to their test date. The NLN username and password are required for the exam. Must use your YC scholar email for the NLN account setup. Go to www.nlnet.org to register/pay for the NLN NACE FON v1.2 exam.

The NLN
NACE FON
V1.2 is taken
online.

Onsite only.

Virtual
proctoring is
not
permitted.

NACE FON v1.2 Test Information

NURSING ACCELERATION CHALLENGE EXAM STUDY RESOURCES

•NLN Website

- <https://www.nln.org/education/assessment-services/assessments/nace-assessment>
- Study manual –eBook, Student guide available

Additional study resources

Quizlet: www.quizlet.com

AT A GLANCE

- 150 minute time allotment
- 100 items leveled for PN/VN
- Onsite or LIVE virtual proctoring
- Scores available immediately
- ADA accommodations available

NACE FOUNDATIONS V1.2 TECHNICAL MANUAL





Applying to the Nursing Program at YC:

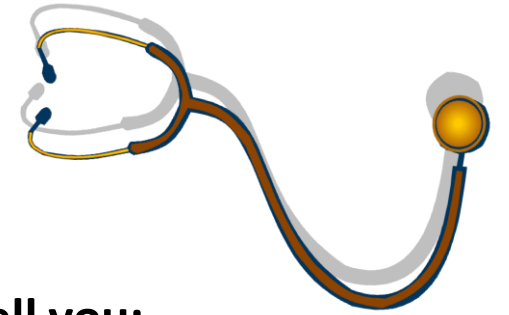
What steps do I take?

Admission into the Nursing Program

- Enrollment is limited and highly competitive
- Students **MUST** meet the minimum requirements of the program and those of Yavapai College
- Applicants are responsible for obtaining the most recent **Application Information Guide**. Current requirements and procedures for application may be obtained online at the Nursing website: www.yc.edu/nursing.

Nursing Application:

- Available online <http://www.yc.edu/nursing>
Application deadlines are posted on the website.
- **READ THE NURSING APPLICATION INFORMATION GUIDE – it will tell you:**
 - Steps to apply for admission
 - Additional admission requirements ***after*** conditional acceptance
 - Notification of acceptance
- **Applications must be submitted electronically through Dynamic Forms (YC login required)**
- **All required documentation must be submitted with the application by the due date deadline.** (All required documents must be uploaded to the Dynamic Form Application prior to submission. Any incomplete sections or missing documents will result in an incomplete application. Any incomplete application will not be reviewed or scored).



The following must be completed and included with your application:

- ❖ Students **MUST** complete this Self-Paced Information Session and the Information Session Verification Questionnaire within 12 months of application
- ❖ **Pre-Admission Test Results:**
 - AAS applicants: TEAS entrance exam** with a minimum score of 60.0%
 - LPN-RN AP applicants: NLN NACE FON v1.2 exam** with a minimum score of 68%
- ❖ Completed Advisor Pre-Entry Check Sheet Form for the Nursing Program signed and dated by Advisor and Applicant.
- ❖ Submit unofficial YC transcripts and from every college attended. (Official transcripts must be mailed to the registrar's office)
- ❖ **AAS applicants:** Copy of CNA certificate or LNA license or proof of completion of AHS 114
- ❖ **LPN-RN AP applicants:** Submit copy of Nursys Quick Confirm License Verification Report
- ❖ Students will be required to provide proof of residency (tuition residency is defined by the Arizona State Legislature and is outlined in the Yavapai College catalog).
- ❖ AZ Department of Public Safety Level 1 Fingerprint Clearance Card (must be valid for the duration of the program)
<https://www.azdps.gov/services/public/fingerprint>
- ❖ **LPN-RN AP applicants:** Certificate of completion of a pharmacology refresher course, proof of completion of IV certification, dosage calculation exam score.

SELECTION CRITERIA POINT SYSTEM

Admission to the program is based on a 1000-point system. Proof of coursework and registration history at Yavapai College will be established by the records on file in the Registrar's office. ***Final selection and placement will be determined by the Program Admissions Committee.***

Points are calculated by a formula related to:

- Current Nursing Prerequisite GPA
- ATI TEAS/NLN NACE FON v1.2 pre-entrance exam
- Residency
- Total General Education Credits Complete
- General Education Credits earned at Yavapai College

Achieving a high level of success in the pre-entry and co-requisite courses will improve a student's chance for admission to the program. As will a high score on the ATI TEAS or NLN NACE FON v1.2.

AAS Nursing Program Selection Criteria			
Category	Ranking Criteria	Criteria Points Values	Possible Points
1	Prerequisite GPA 2.0 or higher to apply	GPA of pre-req. credits completed 2.0 or greater = _____ 50 Example: 2.0 x 50 = 100 points	200
2	ATI TEAS Pre-Entrance Cumulative Score 60.0% minimum is required for application submission	84.8-100% = 500 points 78.0-84.7% = 450 points 72.8-77.9% = 400 points 65.4-72.7% = 350 points 60.0-65.3% = 300 points Example: Cumulative Score of 60% = 300 points	500
NLN NACE FON v1.2 score \geq 68% = 400 points score < 67.9% = 0 points Dosage calc \geq 95% = 100 pts. Dosage calc < 95% = 0 pts			
3	Total General Education Credits Completed	28 pre-req credits = 100 points 3.5 points per credit hour completed- 2 additional points for all 28 credits <u>complete</u> at <u>time</u> of application	100
4	*Residency	Yavapai County = 100 points State of Arizona = 50 points *Min. 1 yr. <u>at time</u> of application submission	100
5	Current Yavapai College Student	Completed pre-program entry and program general education credits at Yavapai College 12 or more credits = 100 points 9-11 credits = 80 points 6-8 credits = 60 points 3-5 credits = 40 points	100

Applicants selecting Prescott Campus placement:

- The highest-ranked applicants will be offered Prescott Campus seats, subject to space availability.
- All other qualified applicants on the ranking spreadsheet will be offered alternate status.

Applicants selecting Verde Campus preference:

- The highest-ranked applicants will be offered Verde Campus seats, subject to space availability.
- All other qualified applicants on the ranking spreadsheet will be offered alternate status.

Once a campus has been assigned to and accepted by a student, it should be assumed that there will be no transfer offered.

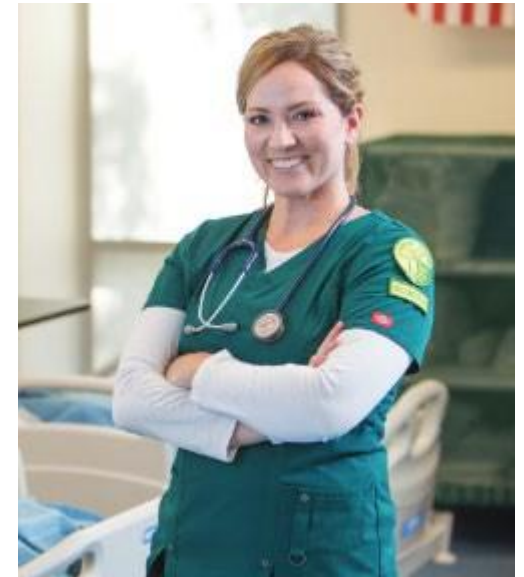


Yavapai College does not maintain a wait list. However, we do keep an alternate list in the event an applicant declines seat placement or does not pass their pre-requisites.

NOTIFICATION OF CONDITIONAL ACCEPTANCE

After submitting your application:

- ❖ All qualified applicants will receive notification of **Conditional Acceptance** within 30 days of the application deadline.
- ❖ Applicants who are not selected will receive a letter of regret.
- ❖ Any qualified applicant, in excess of the number of seats available, will receive notification of **Alternate Status**.
- ❑ Alternates may be accepted if an accepted applicant declines placement, does not successfully complete all required prerequisites, or does not submit the required documentation in a timely fashion.
- ❑ We do not maintain a waitlist. Applicants not selected must reapply for the next application cycle.



CONDITIONAL ACCEPTANCE

Acceptance and Conditional Acceptance Packet

Upon receiving the **Conditional Acceptance Packet**, the applicant will be required to set up their CastleBranch account (YC Nursing software that collects and monitors all Nursing Program Health Requirements while in the Nursing program):

- Criminal Background review
- **Random Drug Screening** – zero tolerance to include marijuana
- Immunization Tracker: MMR, Varicella, TDAP, Hep B, (or proof of titers), Flu, Covid-19, tuberculosis screening - [immunization-requirements.pdf \(yc.edu\)](#)
- American Heart Association BLS | CPR (Basic Life Support | Cardiopulmonary Resuscitation)
- Driver's License
- Physical - use the Health Care Provider Signature Form
- **Medical Insurance** – must be maintained throughout the program
 - **Make an appointment with [YC's Basic Needs Office](#)**
- Three release forms

Health Requirements **MUST** be current throughout the entire semester the student is enrolled in.

NURSING PROGRAM ESTIMATED COSTS

Estimated Cost for the Nursing Program 24-25AY (Based upon Arizona Resident Student Status)

Pre-Requisite Tuition cost includes pre-program entry AHS114	\$4,667
Program Tuition (AAS) \$203 per credit x 40.5 credits (courses with NSG prefix)	\$8,221.50
Textbooks (eBook bundle) +APA and Drug Guide (printed texts and recommended materials for additional cost). OER resources will be used for selected nursing courses.	1st Year \$823 2nd Year \$0
Other required Clinical Items - MyClinicalExchange (Partnered clinical sites software used to track Clinical Requirements) \$20-25 per semester	\$75
Background check, drug screening and Clinical Requirements software -- CastleBranch (YC Nursing software used to track Clinical Requirements)	\$162.50
Uniforms and shoes	Varies by vendor \$300
Physical Exam and Immunizations	Varies by Provider \$350
CPR certification	Varies by Provider \$58
Fingerprinting Fees (AZ DPS)	Subject to change \$74.95
Transportation	Varies by clinical location \$750
Nursing Pin (after Program completion)	\$10
RN Licensure fees (Due in 4th Semester) (RN Exam and Endorsement \$300, background check \$50)	\$350
RN – BSN Tuition Costs (\$305 x 30.5 credits)	\$9,302.50
LPN – RN Advanced Placement Tuition Costs (\$203 x 19.5 credits)	\$3,958.50
LPN Step-out Tuition costs (\$203 x 21 credits)	\$4,263

At Yavapai College, we offer many options for tuition payment

FAFSA –Free Application for Federal Student Aid

- Complete the FAFSA every year at: www.studentaid.gov
- Required for grants and loans
- Details about student loans, repayment options, federal and state scholarship search engines at www.studentaid.gov

Scholarships

- Apply early!
- Most scholarships require FAFSA completion

YC Scholarships

- Apply through the YC portal under Student Support Services or <https://www.yc.edu/v6/financial-aid/>

Nursing Scholarships

- Community Health Care Scholars Scholarship
- AZ Community Foundation at www.azfoundation.org
- Nursing Scholarship program at www.HRSA.gov

Nursing Student Handbook:

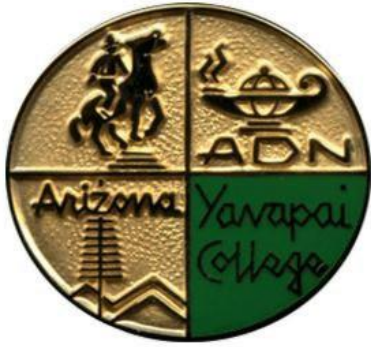
Recommended to review after receiving the **Conditional Acceptance Letter**.

Key Policies in the Student Handbook:

- Attendance Policy
- Testing and Remediation Policy
- Grading
- Study Time
- Coordinating School with Other Obligations
- Progression in the Nursing Program
- Civility
- Professional Behavior and Appearance
- Delays and Closures Information/alert YC
- Campus Placement
- Appeal Policy



To find the Nursing Student Handbook, www.yc.edu/nursing



Thank you for Viewing the Pre-Nursing Workshop

- Click on the class verification link on the YC.edu/nursing page and answer all the questions. This will generate a certificate of completion that will be sent to your email.
- Please make sure to include your name, YC email and phone #.
- You must include the certificate of completion with your Nursing program application.